

1326042-1 ✓ ACTIVE

AMP 0.64 Connector System

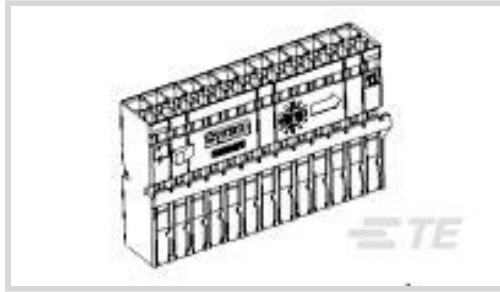
TE Internal #: 1326042-1

Housing for Female Terminals, Wire-to-Wire, 26 Position, .1 in [2.54 mm] Centerline, Black, Signal, AMP 0.64 Connector System

[View on TE.com >](#)



Connectors > Automotive Connectors > Connector Housings



Connector & Housing Type: **Housing for Female Terminals**

Mating Tab Width: **.64 mm [ .025 in ]**

Connector System: **Wire-to-Wire**

Number of Positions: **26**

Centerline (Pitch): **2.54 mm [ .1 in ]**

### Features

#### Product Type Features

Connector Shape	Rectangular
Connector & Housing Type	Housing for Female Terminals
Connector System	Wire-to-Wire
Sealable	No
Hybrid Connector	No

#### Configuration Features

Number of Positions	26
Number of Rows	2

#### Body Features

Body Material	Other
Primary Product Color	Black
Connector Code	A

#### Contact Features

Contact Size	.64mm
Contact Type	Receptacle
Mating Tab Width	.64 mm[.025 in]

#### Mechanical Attachment

Mounting Feature	Without
------------------	---------



Terminal Position Assurance	No
Strain Relief	Without
Mating Alignment Type	Keyed
Mating Alignment	With
Connector Mounting Type	Cable Mount (Free-Hanging)

### Housing Features

Centerline (Pitch)	2.54 mm[.1 in]
--------------------	----------------

### Dimensions

Product Width	7.9 mm[.311 in]
Product Length	33.7 mm[1.323 in]
Product Height	20.4 mm[.803 in]
Row-to-Row Spacing	5.9 mm[.232 in]

### Operation/Application

Circuit Application	Signal
---------------------	--------

### Industry Standards

Agency/Standard	USCAR-2
UL Flammability Rating	UL 94HB

### Packaging Features

Packaging Quantity	50
Packaging Method	Package

### Other

Serviceable	No
Connector Position Assurance Capable	No

### Product Compliance

[For compliance documentation, visit the product page on TE.com>](#)

EU RoHS Directive 2011/65/EU	Compliant
EU ELV Directive 2000/53/EC	Compliant
China RoHS 2 Directive MIIT Order No 32, 2016	No Restricted Materials Above Threshold
EU REACH Regulation (EC) No. 1907/2006	Current ECHA Candidate List: JUNE 2022 (224) Candidate List Declared Against: JUNE 2022 (224)



Does not contain REACH SVHC

Halogen Content

Low Halogen - Br, Cl, F, I < 900 ppm per homogenous material. Also BFR/CFR/PVC Free

Solder Process Capability

Not reviewed for solder process capability

Product Compliance Disclaimer

This information is provided based on reasonable inquiry of our suppliers and represents our current actual knowledge based on the information they provided. This information is subject to change. The part numbers that TE has identified as EU RoHS compliant have a maximum concentration of 0.1% by weight in homogenous materials for lead, hexavalent chromium, mercury, PBB, PBDE, DBP, BBP, DEHP, DIBP, and 0.01% for cadmium, or qualify for an exemption to these limits as defined in the Annexes of Directive 2011/65/EU (RoHS2). Finished electrical and electronic equipment products will be CE marked as required by Directive 2011/65/EU. Components may not be CE marked. Additionally, the part numbers that TE has identified as EU ELV compliant have a maximum concentration of 0.1% by weight in homogenous materials for lead, hexavalent chromium, and mercury, and 0.01% for cadmium, or qualify for an exemption to these limits as defined in the Annexes of Directive 2000/53/EC (ELV). Regarding the REACH Regulation, the information TE provides on SVHC in articles for this part number is based on the latest European Chemicals Agency (ECHA) 'Guidance on requirements for substances in articles' posted at this URL: <https://echa.europa.eu/guidance-documents/guidance-on-reach>

### Compatible Parts



TE Part # 1326362-1  
26WAY LAC "COMMON" SHIELD ASMB



TE Part # 1326136-2  
26WAY LAC "SINGLE GEAR" ASMBLY



TE Part # 638551-3  
CONTACT,FEMALE,0.64MM,SN,18-20



TE Part # 1326028-3  
0.64MM FEMALE CONTACT,AU,18-20



TE Part # 1326028-5  
.64MM FEM CONT,AU,18-20,FORMED



TE Part # 638551-1  
CONTACT,FEMALE,0.64MM,SN,18-20



TE Part # 1326028-2  
0.64MM FEMALE CONTACT,AU, 22AWG



TE Part # 638551-4  
CONTACT,FEMALE,0.64MM,SN,22



TE Part # 1326028-1  
0.64MM FEMALE CONTACT,AU,18-20



TE Part # 638551-2  
CONTACT,FEMALE,0.64MM,SN,22



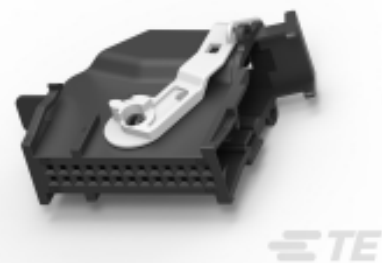
TE Part # 1326028-4  
0.64MM FEMALE CONTACT,AU, 22AWG



TE Part # 1326028-6  
0.64MM FEMALE CONTACT,AU, 22AWG



TE Part # 1326122-1  
52WAY LAC "SINGLE GEAR" SHIELD



TE Part # 1326136-1  
26WAY LAC "SINGLE GEAR" ASMBLY



TE Part # 1326362-3  
26WAY LAC "COMMON" SHIELD  
ASMB



TE Part # 1326362-2  
26WAY LAC "COMMON" SHIELD  
ASMB

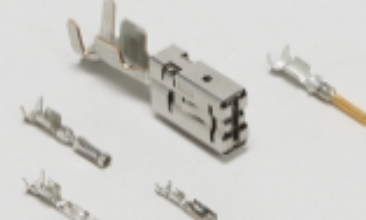
## Also in the Series | AMP 0.64 Connector System



Automotive Connector Caps & Covers  
(19)



Automotive Housings(31)



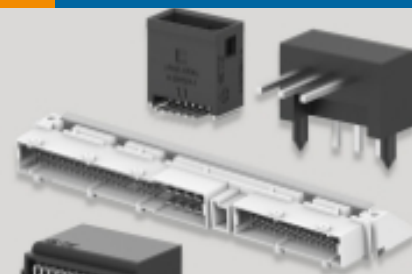
Automotive Terminals(13)



Insertion & Extraction Tools(1)



Other Automotive Connector  
Accessories(1)



PCB Headers & Receptacles(38)

## Documents

### Product Drawings

LAC CARRIER, 26 POS, 0.64MM, A KEY

English

### CAD Files

Customer View Model

[ENG\\_CVM\\_CVM\\_1326042-1\\_S.2d\\_dxf.zip](#)

English

### 3D PDF

3D

Customer View Model

[ENG\\_CVM\\_CVM\\_1326042-1\\_S.3d\\_igs.zip](#)

English

Customer View Model

[ENG\\_CVM\\_CVM\\_1326042-1\\_S.3d\\_stp.zip](#)

English

1326042-1

Housing for Female Terminals, Wire-to-Wire, 26 Position, .1 in [2.54 mm] Centerline,  
Black, Signal, AMP 0.64 Connector System



By downloading the CAD file I accept and agree to the [Terms and Conditions](#) of use.

## Instruction Sheets

### Instruction Sheet (U.S.)

English